

SM005

Power Supply Block Diagram

HITACHI

1.AC input

No	CN61
1	AC(L)
2	NC
3	AC(N)
4	NC
5	NC
6	FG

2.signal 1

No	CN63
1	STB 5V
2	NC
3	STB 3.3V
4	Power off
5	GND

4.Panel 1

No	CN64
1	Va
2	NC
3	Vcc
4	GND
5	GND
6	GND
7	NC
8	Vs
9	Vs
10	Vs

6.Panel 5

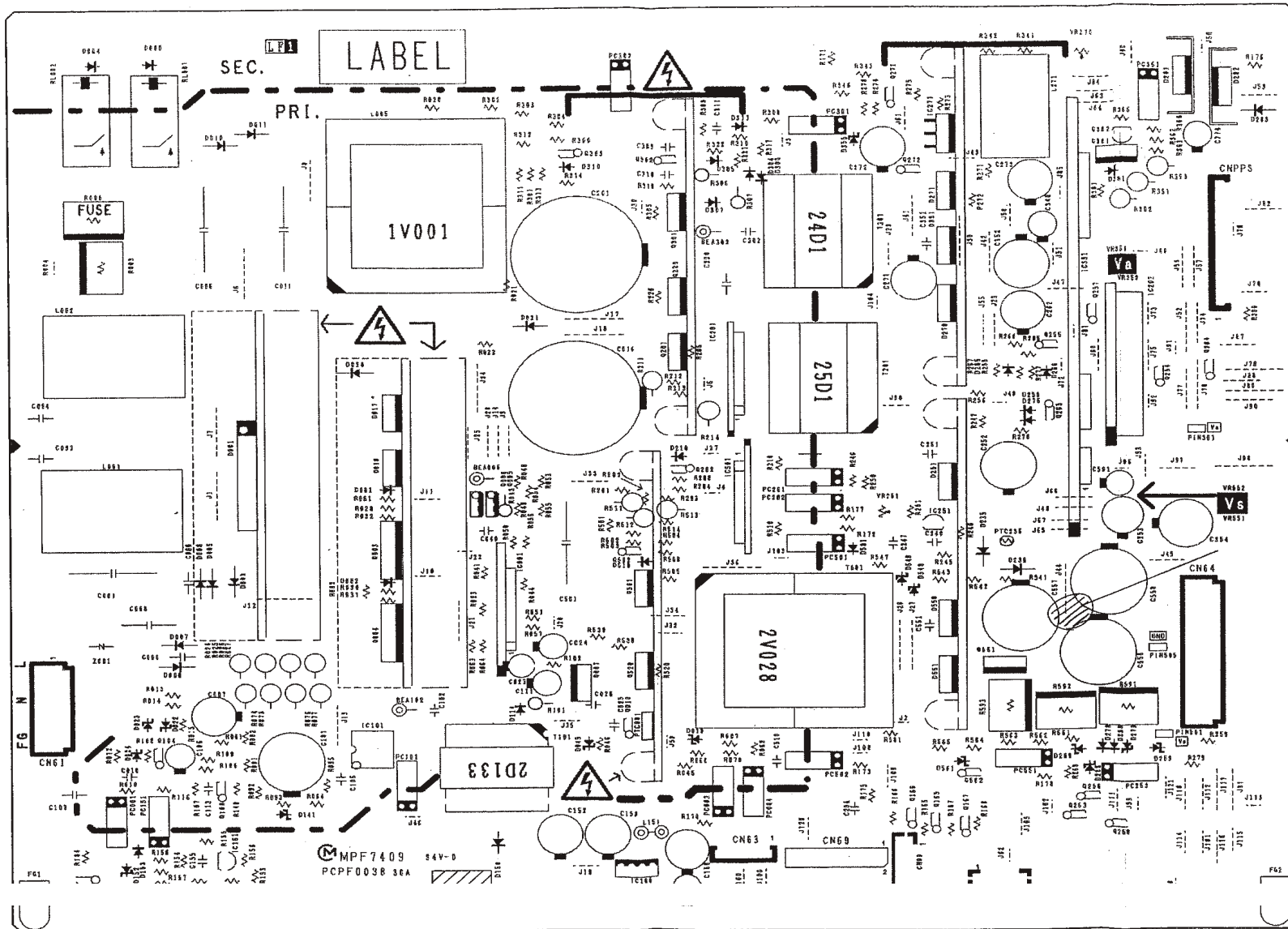
No	CN69
1	NC
2	NC
3	NC
4	NC
5	GND
6	Vsago
7	GND
8	Vcago
9	GND
10	PFCgo
11	GND
12	Vra
13	GND
14	Vrs
15	GND
16	NC
17	GND
18	NC
19	GND
20	NC

3.Signal 2

No	CNPPS
1	30V
2	GND
3	GND
4	5V
5	5V
6	GND
7	GND
8	12V
9	12V
10	GND
11	GND
12	10V
13	10V

5.Panel 4

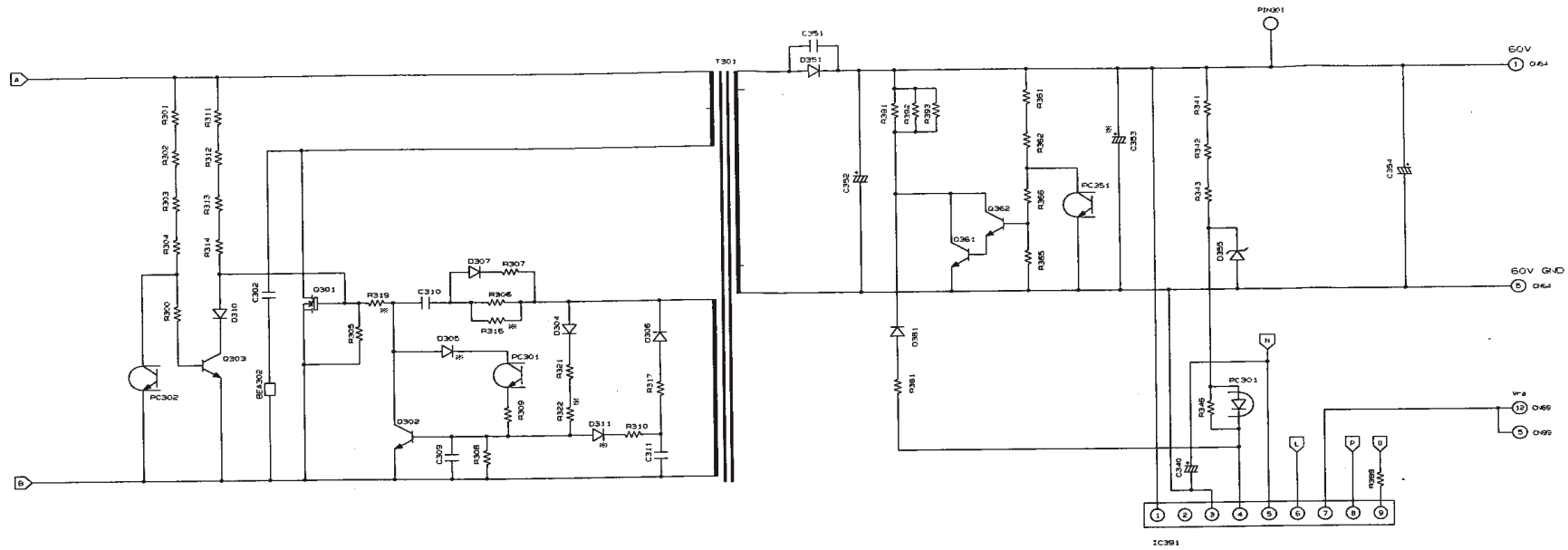
No	CN68
1	STB 3.3V
2	NC
3	GND
4	GND
5	NC
6	Vcc



SM005

Power Supply Circuit Board

HITACHI

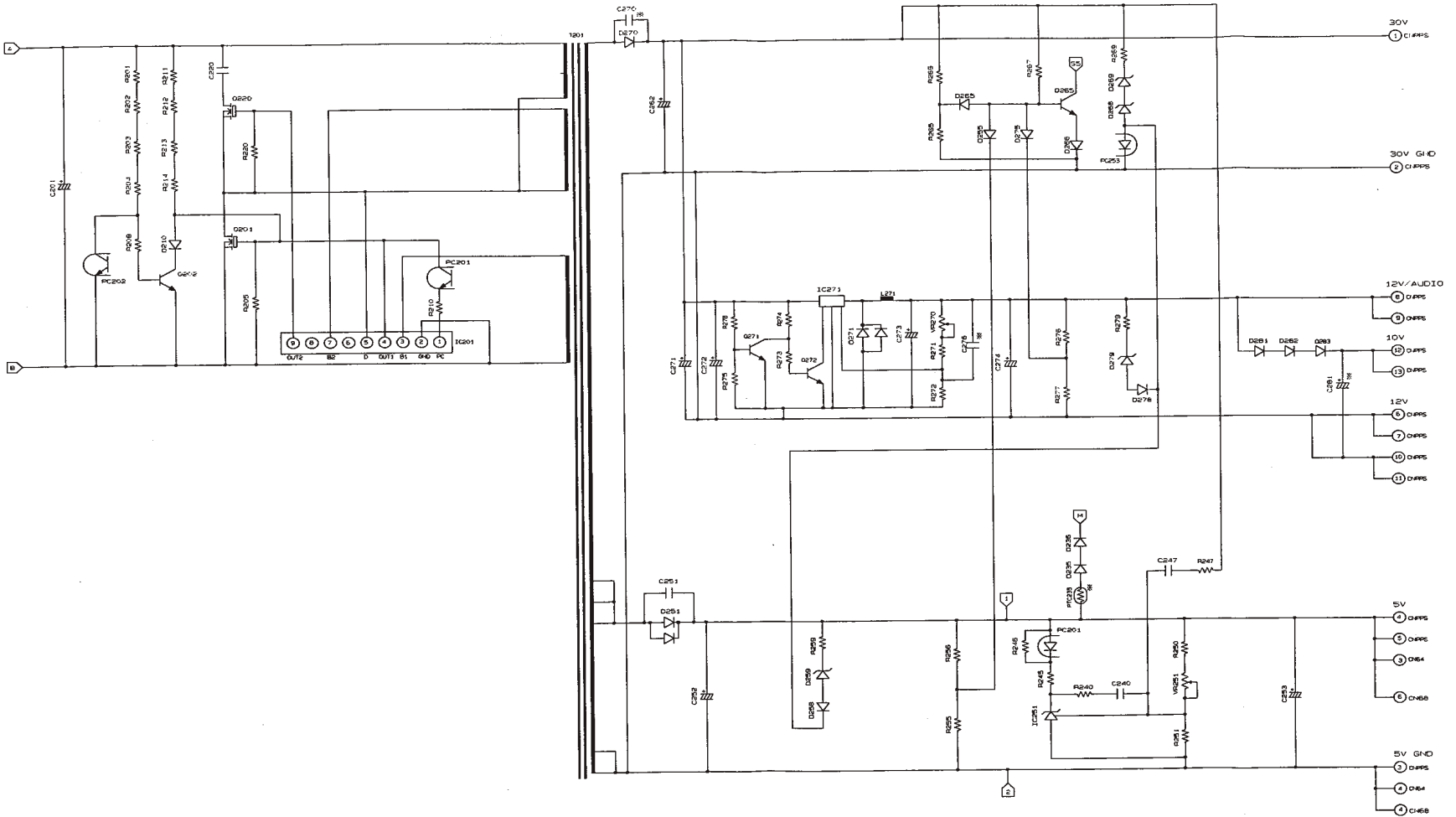


* : OPTIONAL

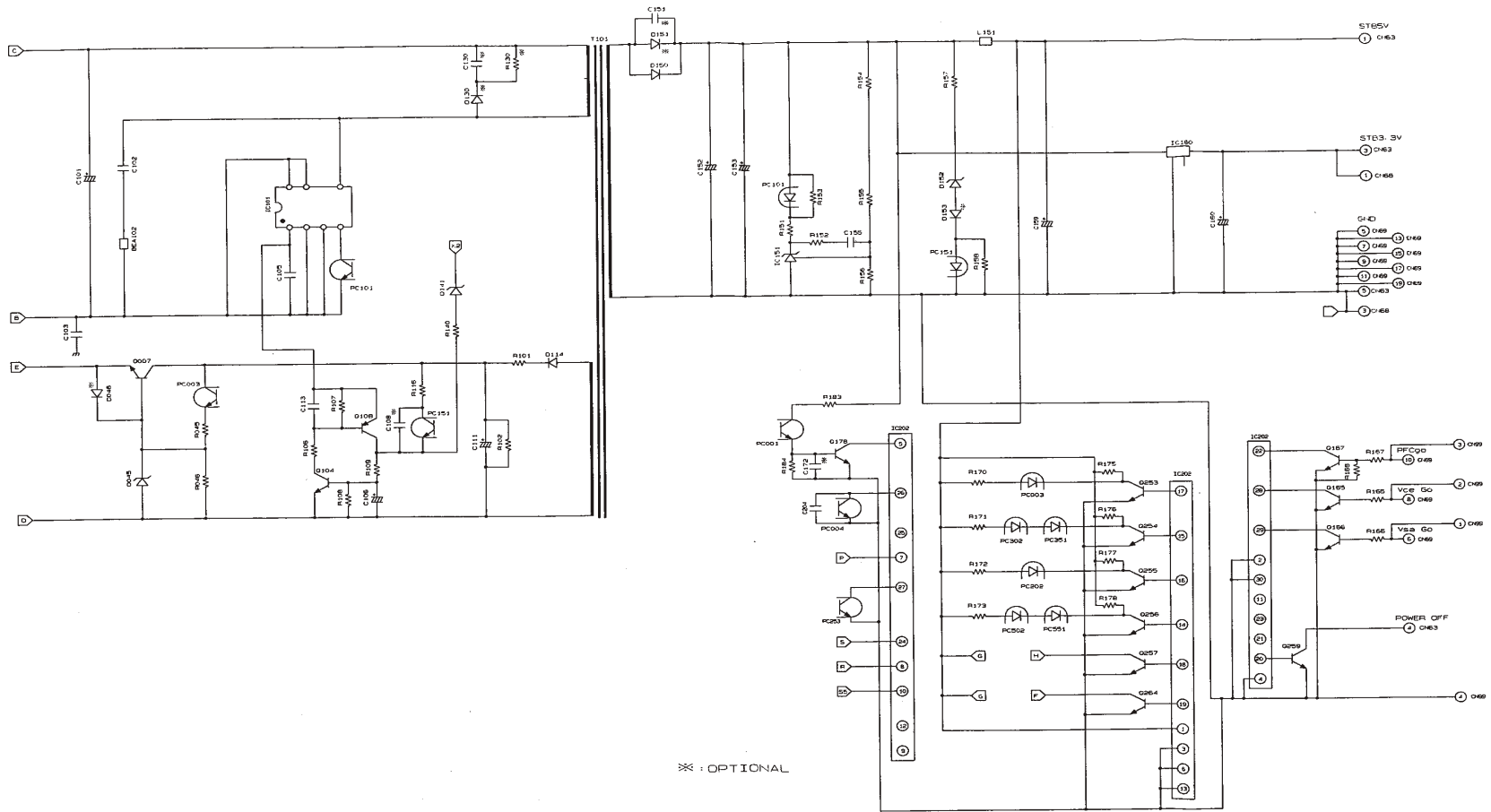
SM005

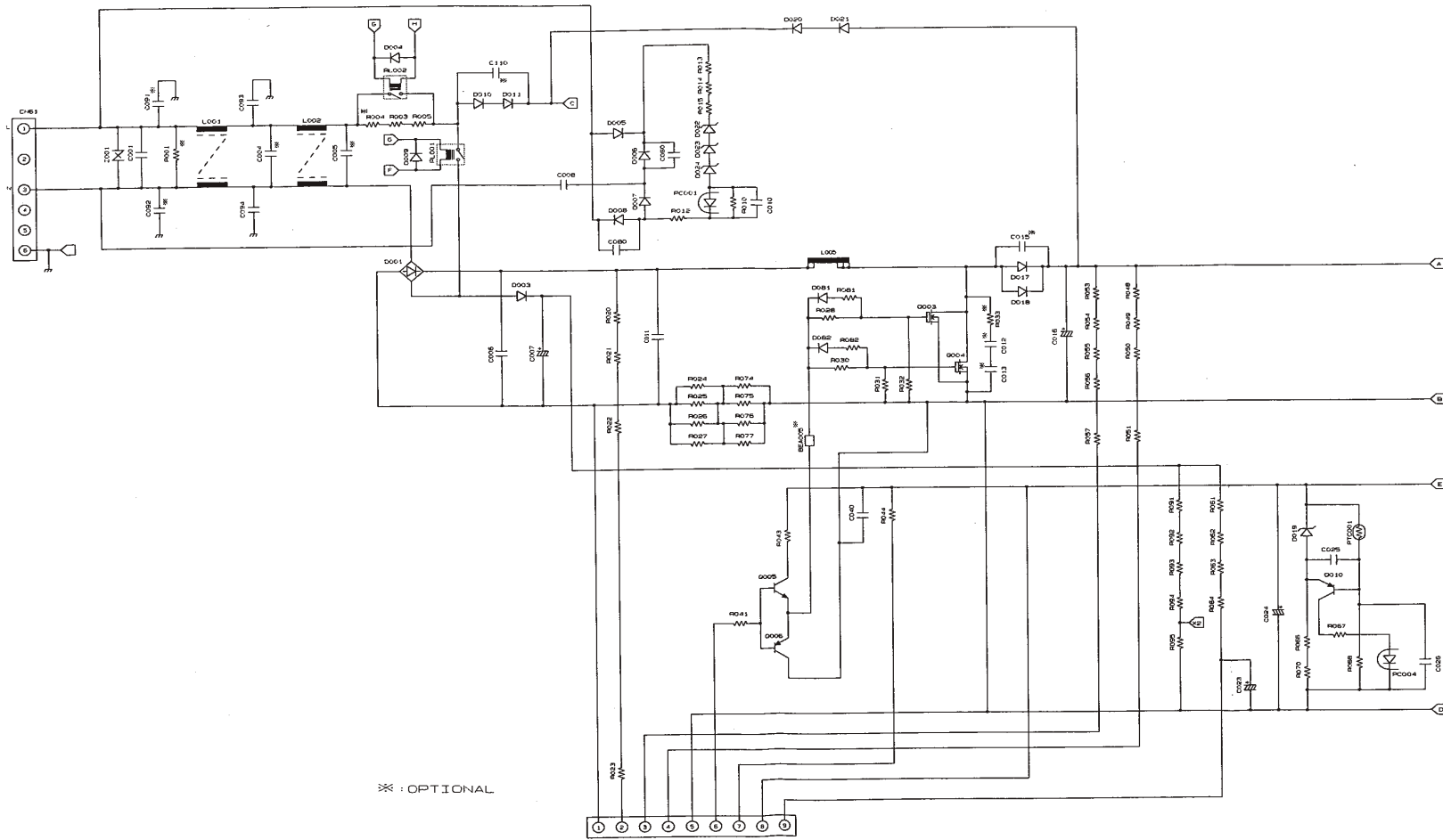
Power Supply Circuit - 1 of 5

HITACHI



※ : OPTIONAL

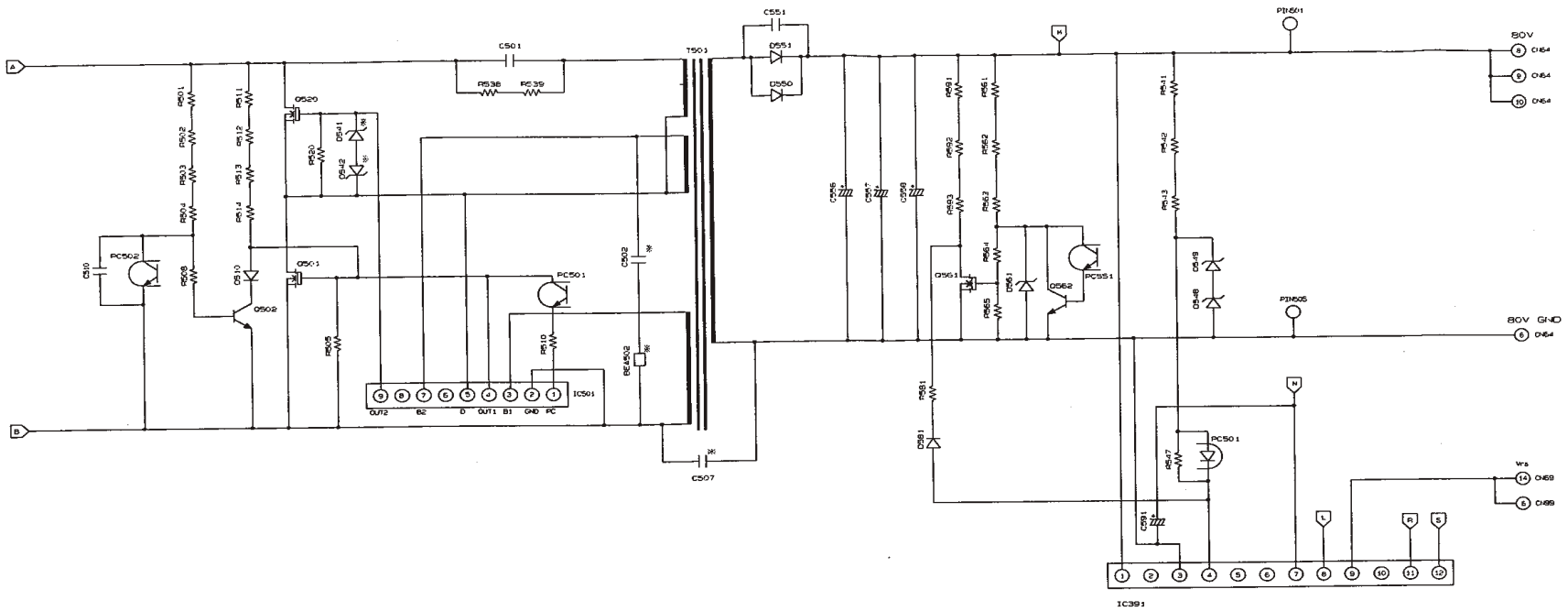




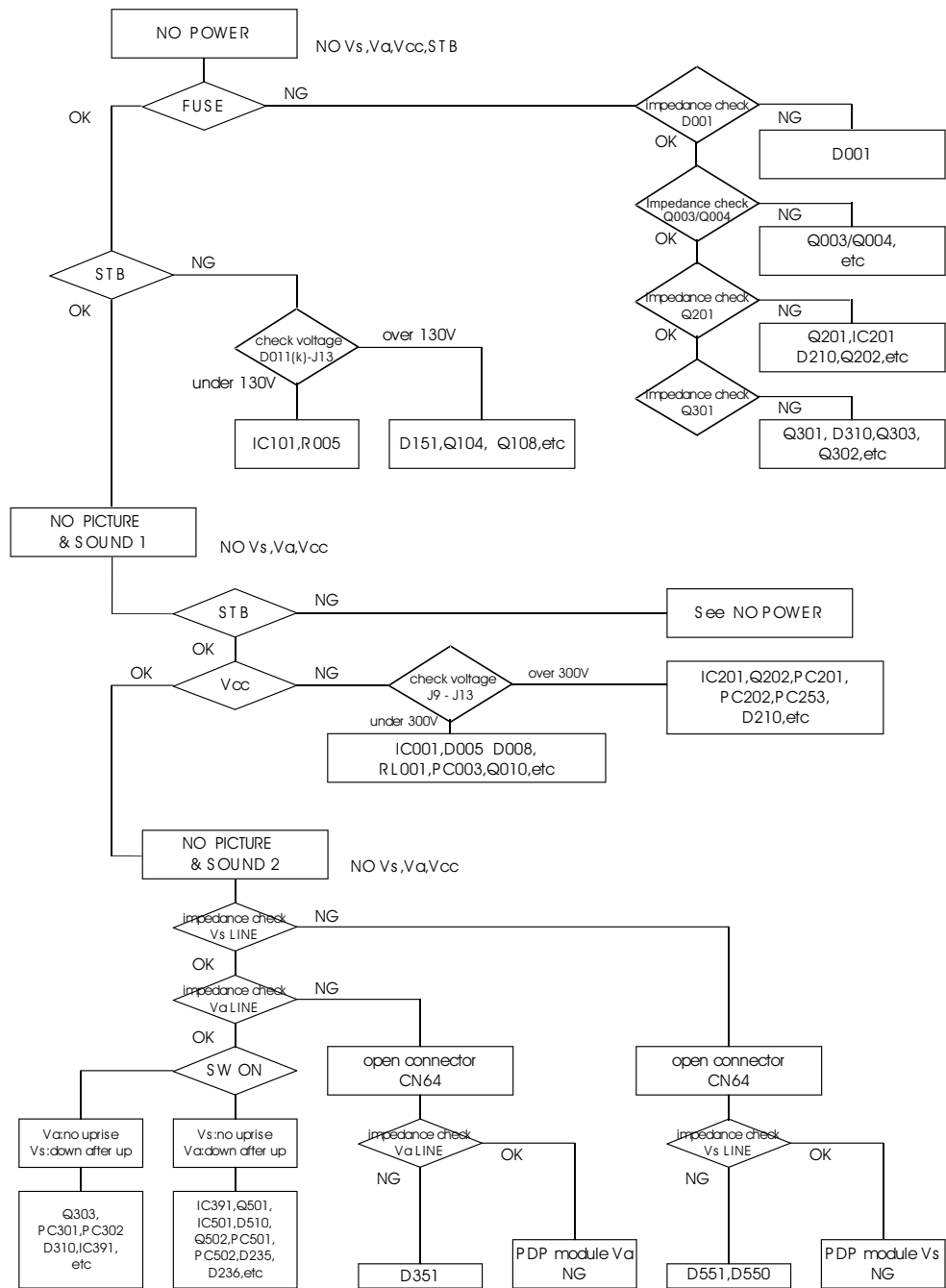
SM005

Power Supply Circuit - 4 of 5

HITACHI



※ : OPTIONAL



Vcc LINE is down, when Vs, Va LINE is down in MPF7409 L.